



FMW Web

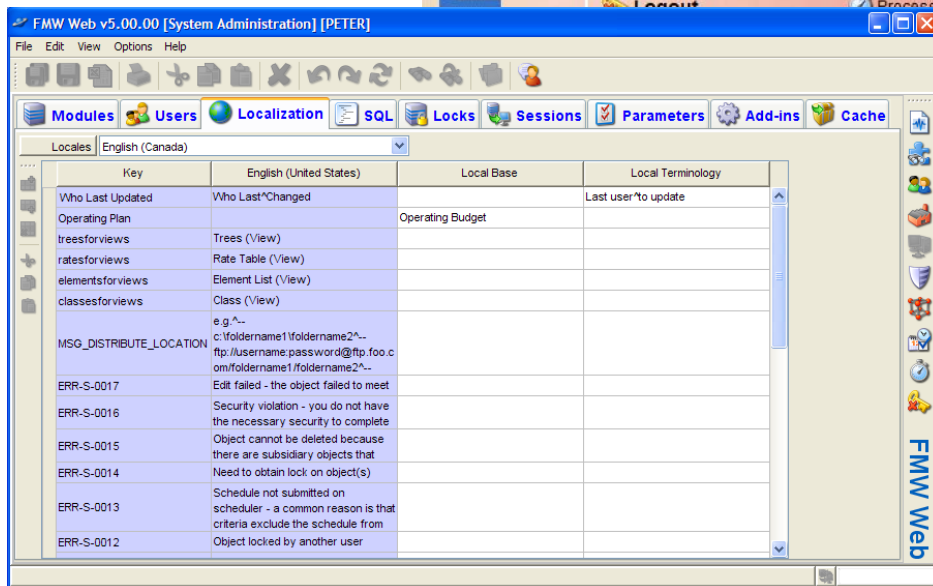
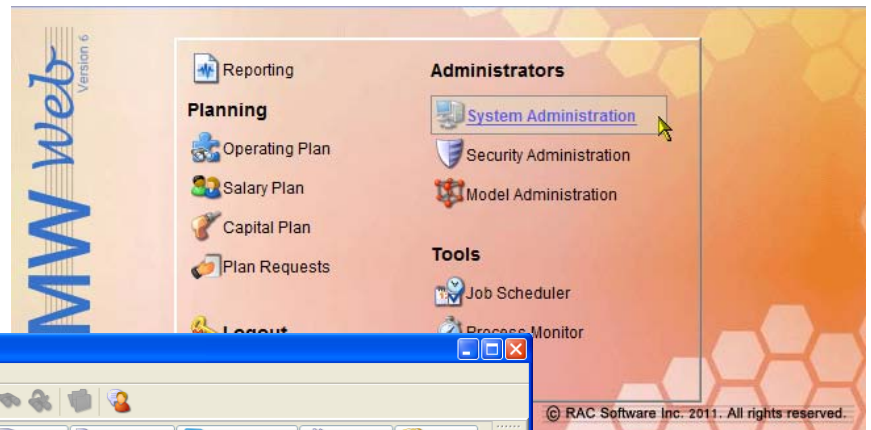
Financial Manager's
Workbench - Web edition

Precise management, monitoring and control for system administrators.



FMW Web is a sophisticated multi-user system, and as such system administrators need to be able to monitor and exercise precise control over how the system is performing and being utilized. The System Administration module comprises a set of tools with which system administrators can easily manage key aspects of how the system operates and performs. These tools include license and module management, user management, localization, concurrency (lock) management, SQL management, cache management, session management, and add-in management.

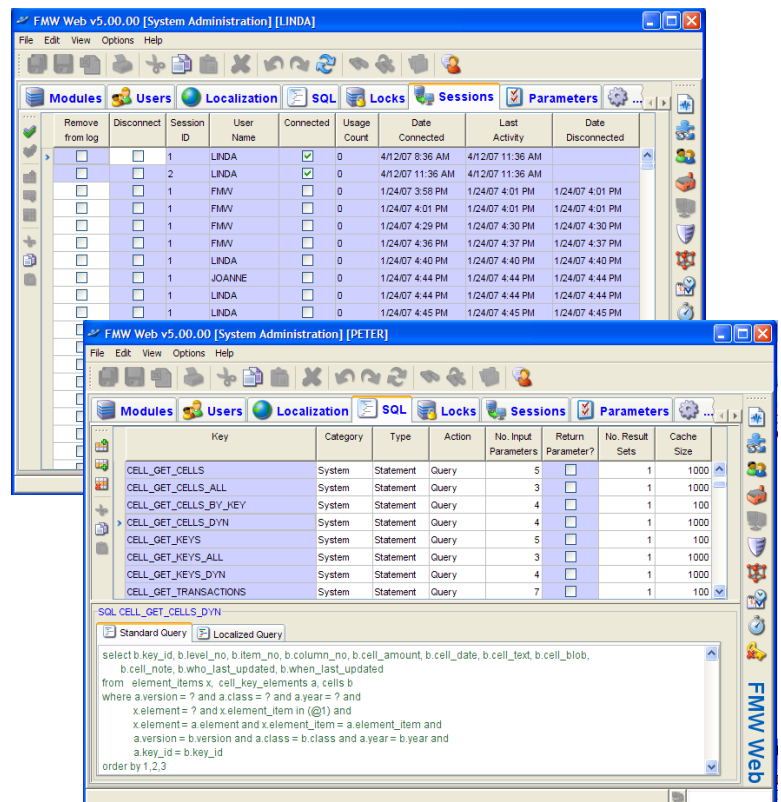
The FMW System Administration module is a set of tools facilitating easy management of the FMW Web system. Using a set of graphical user interfaces, system administrators can monitor, control and adjust key aspects of how the system operates and performs.



Key Features

- **Module management.** Using this tool, system administrators can globally enable and disable FMW Web modules.
- **User management.** This tool allows system administrators to add, remove and enable / disable FMW Web users. Major roles and module access assigned to each user is controlled here as well as other information such as passwords and e-mail addresses. This functionality is also available in the Security Administration module.
- **Localization management.** Every label in FMW Web can be translated or localized. This tool is used both to localize terminology to suit specific applications, as well as to present FMW Web in multiple languages. Different users of a single FMW Web application can be presented with different languages and terminology to suit local conditions.
- **SQL management.** All SQL used to interact with the database is available through this module. Although in most cases the delivered SQL will be used, local versions of the SQL can be implemented in order to tune performance or to customize the database interaction to suit a specific requirement.
- **Lock management.** FMW Web is a multi-user system with a centralized database. This means that a sophisticated concurrency management system is needed to control simultaneous access to data and guarantee data integrity. This tool allows system administrators to monitor and manage the locks that are in existence at any give time.

- **Session management.** This tool is used to monitor and record every session established to FMW Web, including dates of log-in, log-out, and last activity. Sessions can also be terminated using this tool.
- **Add-in management.** FMW Web has a uniquely extensible architecture which allows custom business logic to be added to the system and accessed by users as with any native function. This tool is used to register add-ins and make them accessible to the system.
- **Cache management.** In many cases in order to enhance performance, data is cached on the server for reuse. This tool allows the system administrator to monitor what is in the cache at any point and if required to manually release certain cached data.



RAC Software Inc.

1540 Cornwall Rd.
Suite 215
Oakville, ON, Canada
L6J 7W5
Phone: 905-842-7100
Email: racsales@racsoft.com
www.racsoft.com