



**Improved resource utilization through comprehensive automation.**



**The FMW Job Scheduler module allows the chaining and automation of many tasks that need to occur on a regular basis such as interfacing (imports / exports) with other systems, allocations, add-in routines and reports. Each job defined may contain an unlimited number of steps.**

**Advanced scheduling options such as “two working days after the end of the month” can be defined. A system of alerts through e-mail or an internal messenger system can be used to warn managers of a failure in a scheduled process or to confirm a success.**

## FMW Web

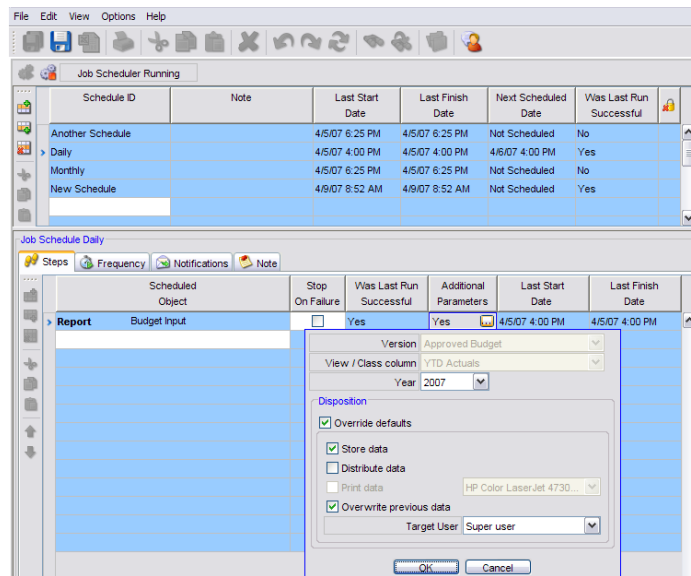
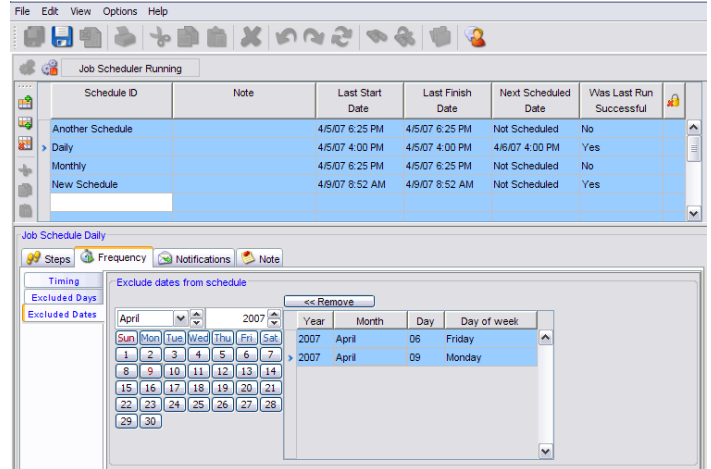
Financial Manager's  
Workbench - Web edition

FMW Job Scheduler is a sophisticated job scheduling system that can be used to automate many aspects of a complex budgeting and reporting process, eliminating errors and utilizing human and computer resources efficiently.

Schedule ID	Note	Last Start Date	Last Finish Date	Next Scheduled Date	Was Last Run Successful
Another Schedule		4/5/07 6:25 PM	4/5/07 6:25 PM	Not Scheduled	No
Daily		4/5/07 4:00 PM	4/5/07 4:00 PM	4/6/07 4:00 PM	Yes
Monthly		4/5/07 6:25 PM	4/5/07 6:25 PM	Not Scheduled	No
New Schedule		4/9/07 8:52 AM	4/9/07 8:52 AM	Not Scheduled	Yes

## Key Features

- Multiple schedules.** As many schedules as required, running at different frequencies, may be defined.
- Schedule status.** The status of each schedule is maintained, including the last start and finish date and the next scheduled date. Each schedule is tracked for successful completion.
- Additional parameters.** Scheduled jobs can be updated by changing the version and year parameter. For example having a default import of YTD Actuals for the current year but also able to override this information to import prior year's actuals.
- Frequency.** Schedules can be set to run on a One Time, Daily, Every  $n$  Seconds, Weekly or Monthly basis. In addition schedules can be based on the number of working days before or after month end. Specific days can be excluded from schedules (e.g. weekends, holidays).
- Start / End.** Both the start and end date and time can be set.
- Process monitor.** The scheduled jobs are tracked in the process monitor where each step of the process is displayed.
- Notification.** E-mail notifications, with customized messages can be established to report to users on either the success or failure of specific schedules.
- Report distribution.** Any report can be scheduled and subsequently distributed to a file server or as an e-mail attachment to multiple recipients.
- Global control.** The Scheduler can be controlled within the FMW Web UI allowing overall control to stop and start the scheduler.



**RAC SOFTWARE INC.**

1540 Cornwall Rd.  
Suite 215  
Oakville, ON, Canada  
L6J 7W5  
Phone: 905-842-7100  
Email: [racsales@racsoft.com](mailto:racsales@racsoft.com)  
[www.racsoft.com](http://www.racsoft.com)